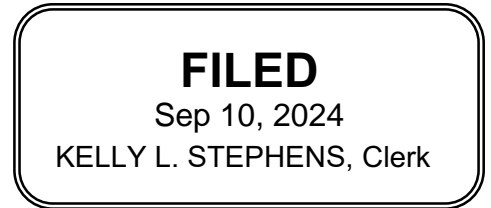


UNITED STATES COURT OF APPEALS
FOR THE SIXTH CIRCUIT

No. 23-5293

ALLAN M. JOSEPHSON,
Plaintiff - Appellee,

v.



TONI M. GANZEL, Interim Executive Dean of Health Affairs and Dean of the School of Medicine at the University of Louisville, in her official and individual capacities; KIMBERLY A. BOLAND, Interim Chair of the Department of Pediatrics at the University of Louisville, in her official and individual capacities; CHARLES R. WOODS, former Chair of the Department of Pediatrics at the University of Louisville, in his individual capacity; JENNIFER F. LE, former Interim Division Co-Chief of the Division of Child and Adolescent Psychiatry and Psychology and current Chief of the Division of Child and Adolescent Psychiatry and Psychology at the University of Louisville, in her official and individual capacities; BRYAN D. CARTER, former Interim Division Co-Chief of the Division of Child and Adolescent Psychiatry and Psychology and Chief of the Division of Psychology at the University of Louisville, in his official and individual capacities; WILLIAM D. LOHR, former Interim Division Co-Chief of the Division of Child and Adolescent Psychiatry and Psychology at the University of Louisville, in his official and individual capacities,

Defendants - Appellants.

Before: GILMAN, GRIFFIN, and MATHIS, Circuit Judges.

JUDGMENT

On Appeal from the United States District Court
for the Western District of Kentucky at Louisville.

THIS CAUSE was heard on the record from the district court and was argued by counsel.

IN CONSIDERATION THEREOF, it is ORDERED that the judgment of the district court is AFFIRMED.

ENTERED BY ORDER OF THE COURT

A handwritten signature in black ink that reads "Kelly L. Stephens". The signature is written in a cursive style with a large initial "K".

Kelly L. Stephens, Clerk